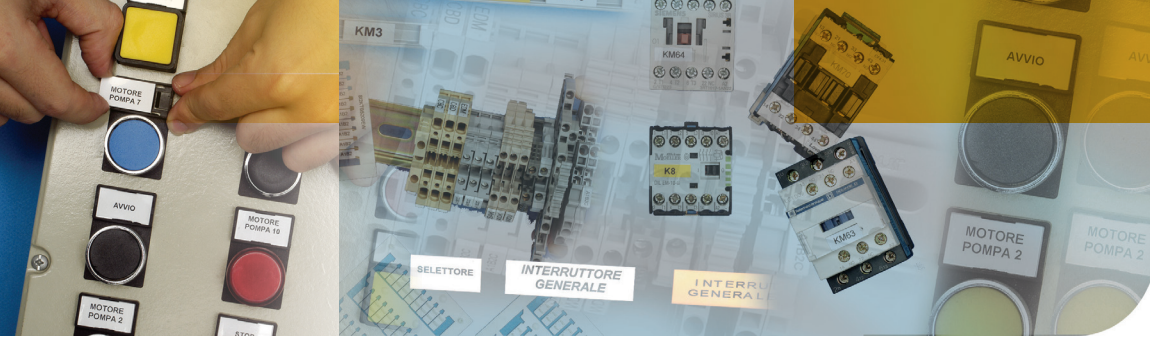


3M Grafoplast™
SI2KEVO Identification System



Durable Custom Identification





3M Grafoplast™ SI2KEVO Identification system

3M provide critical products to panel builders, automation industry, installers, OEMs.

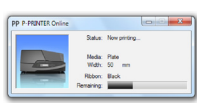
The new 3M™ Grafoplast™ SI2KEVO is the evolution of SI2KSYS1, the well known 3M Grafoplast™ solution for identifying components inside and outside of electrical panels: wires, panels, terminal blocks, devices and other components.

SI2KEVO, featuring USB 2.0 port, higher printing speed, new driver capable to manage all functions without need of local keyboard settings and preloaded setting profiles for easier and faster installation, quickly and efficiently creates highly visible and durable marking.

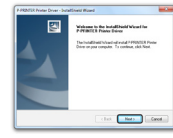
- PC connection**
USB port 2.0
- High productivity**
Automatic feeder mode
- Low maintenance**
Change ribbon and cleaning cartridges through front cover
- High speed**
printing speed up to 60 mm/s
up to 8500 tags/hour
- Power supply**
AC 100 - 240V
50/60Hz
- Power save**
Auto switch off programmable
- Visible**
High contrast
backlight LCD
- Easy interface**
LCD panel in 5 languages
(EN, IT, FR, SP, DE)

Powerful software
Simple graphic interface, advanced serialization, barcodes, images, import from txt, csv, xls,

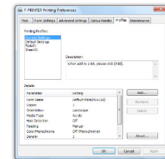
PC user interface
Printer status monitor available on PC screen



User friendly
All the settings can be managed from the driver



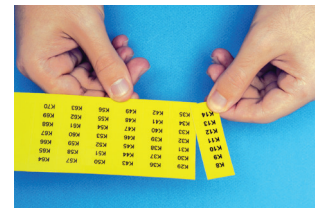
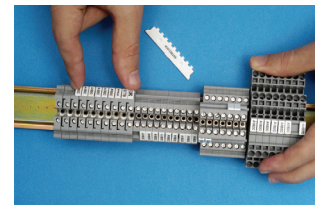
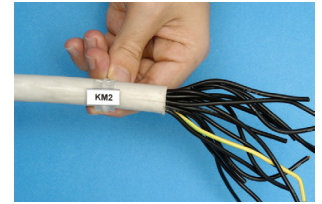
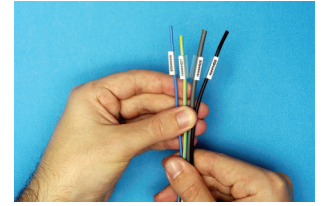
Easy installation
Driver installation wizard preloaded setting profiles



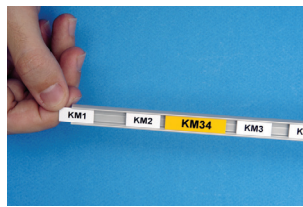
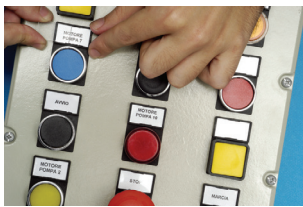
3M Grafoplast™ SI2KEVO

Designed for electrical marking applications, in electrical panel shops and all other applications with high density of wires, cables or electrical devices.

- **Versatile:** Wide variety of materials available and for a wide range of marking applications: wire/cable, cable ties, terminal blocks, internal and external panel (push buttons, channels, name plates, tags, etc.); immediately ready to print as turned on, even after a long stop.
- **High quality:** High resolution (300 dpi) to print not only alphanumeric, but also barcodes, logos, graphics. Resin-based ribbon provide very high durability of marking.
- **High-speed printing:** Up to 8500 tags per hour, automatic feeding allows huge operator's time saving on higher volume tags (cable, terminal blocks, wiremarking tags)
- **Easy to Use:** Tags come in modules that easily feed through the printer, in automatic, single or manual feeding mode. Tags are organized in pre-broken cards, for easy and smart mounting.
- **Low Maintenance:** Easy-to-access print and feed area, change ribbon in few seconds, without touching the ribbon, thanks to the cartridge. Cleaning roll cleans 100% of the printable area of the cards, a special cleaning cassette is provided to clean the print chamber.
- **Compact:** Compact dimensions, low weight and industrial design: the right system for your every day electrical marking needs in your company.

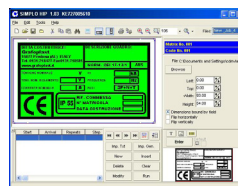
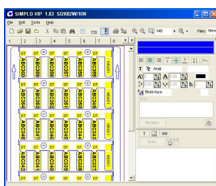


Use 3M Grafoplast™ SI2KEVO and enjoy the efficiency and productivity you need.



Simplo™ HIP: the 3M Grafoplast™ software solution for identification.

Clear and intuitive graphic interface shows directly on the screen the items as it will be printed. Different data insertion formats available: direct typing, logical alphanumeric serializations, spreadsheet interface and import from file; all the printing function, from the easier font management to the most advanced printing options can be easily managed, to fastly reach high quality printing results. Compatible with the most diffused electrical CADs transfer protocols, barcodes standards, graphical formats. Simplo™ HIP can manage multiple jobs and multiple printing devices.



3M Grafoplast™ SI2KEVO - Technical features

SI2KEVO Technical features	Stock number: KE727062280
Type	Table printer
Technology	Thermo Transfer system - Resin based Ribbon
Feeding modes	Automatic, Semiautomatic and manual feeding available
Resolution	300 dpi
Printable area	54 x 496 mm (height x width)
Format of printable media (maximum)	80 x 500 mm (height x width)
External dimensions	423 x 240 x 208 mm
Weight	9,5 Kg
Windows OS compatibility	Windows, XP, Vista, 7
Fonts available	Windows True-type
Graphic formats compatibility	.gif, .jpg, .jpeg, .bmp, .wmf.
Printing speed	up to 60 mm/second
Ribbon cartridges available	SI2KSBN/B - Black colour; SI2KRBN/R - Red colour
Autocleaning system of printable media	Cleaning roll & Cleaning cassette
Connections interface	USB 2.0 (Full speed)
Operating Environment	+15°C to +32,5°C; 10% to 85% Rh
Storage conditions	+5°C to +35°C ; 5% to 90%Rh
Voltage	from 100V to 240V AC, 50/60Hz
Maximum Power Consumption	135W
Display	LCD backlight panel; high visibility characters
Built-in keyboard	Printer setting can be managed by driver or by local keyboard



SI2KEVO system components	
1	Thermo transfer printer
1+1	Cables (power, USB 2.0)
1	Software Simplo HIP
1	Black ribbon - SI2KSBN/B
1	Cleaning cassette - SI2KCLEAN
1	Support base - SI2K0016
1	Universal feeder - SI2K0013N
1	Support plate for cable tags - SI2K0014NP1

Important Notice

Before utilizing any of 3M's products, you should determine the suitability of the product for your intended use. You assume all risks and liability associated with such use.

Warranty; Limited Remedy; Limited Liability.

The 3M Grafoplast SI2KEVO printer will be free from defects in material and manufacture for a period of one year from the date of manufacture. Since print heads are consumable materials, print heads included in the 3M Grafoplast SI2KEVO Printer are warranted for thirty (30) days from the date of purchase. All other 3M products will be free from defects in material and manufacture at the time of purchase, unless otherwise stated in the Product Literature. 3M MAKES NO OTHER WARRANTIES, EXPRESSED OR IMPLIED, INCLUDING ANY IMPLIED WARRANTIES OF MERCHANTABILITY OR FITNESS FOR A PARTICULAR PURPOSE. If the products are defective within the warranty period stated above, 3M's obligation and liability under this warranty are limited to repairing, replacing or refund of the purchase price, at 3M's option, of any 3M's products which, after normal and proper usage, are determined by 3M to be defective. This warranty does not extend to any 3M products which have been subjected to misuse, neglect accident or improper application, nor shall it extend to products which have been repaired or substantially altered outside of 3M's manufacturing or repair facility. In no case shall 3M be liable for any indirect, special, incidental, or consequential damages based upon breach of warranty, breach of contract, negligence, strict liability or any other legal theory.

3M Italia S.p.A.
Divisione Mercato Elettrico
 Via Norberto Bobbio 21
 20096 Pioltello - MI
 Tel. 02/70351
 Fax. 02/70353090
 www.3meletrici.it